



INtime[®] for Windows[®] Licensing
Appendix 1
with Delegate User Account
using License Manager applet
Procedure





Appendix 1 – License Manager applet with a delegate user account

INtime versions before 6.4.22130 require an update to the License Manager. Download TenAsys_Licman_Setup.exe from the My Downloads page.

Use this procedure if the INtime distribution host has an internet connection and an interactive installation is desired. The *User Name* and *Password* for a delegate user account administered by your company's Operations Manager is required. The license will be allocated from the account.

Identifying license components:

Fingerprint: ---- BEGIN HOST INFO ----<ascii>---- END HOST INFO ----

Entitlement Code: 8digits-4digits-4digits-4digits-12digits<32 Hexadecimal digits total>

01234567-89AB-CDEF-0123-456789ABCDEF

Used once to obtain a license from the TenAsys license server.

License String: *<ascii license string>[# "16" version "", no expiration date, exclusive...]

Located in the %INTIMECFG%\servrc file.

License Manager applet –in the INtime Configuration Panel, also referred to as licman.exe.

The License Manager applet option removes the manual steps involved in the licensing process by connecting the INtime installation to the TenAsys license server.

The interaction with the server first establishes a connection to validate the delegate user account, then sends the "fingerprint" data, and installs the returned license string.

Windows - Local User Considerations

These tools require administrator privileges to run successfully.

Step by Step Automated Example to obtain a license

After installation of INtime for Windows, and a system reboot, open the INtime Configuration Panel. (On Windows Vista version and later a prompt to allow an "unknown supplier" application to run may appear in a pop-up message. Please select "yes".)

The INtime Configuration Panel can be accessed either by selecting "INtime Configuration" from the INtime Status Monitor in the Windows System Notification Area, or by typing in "INtime" in the search bar of the Start Menu and selecting "INtime Configuration" from the list of applications listed.

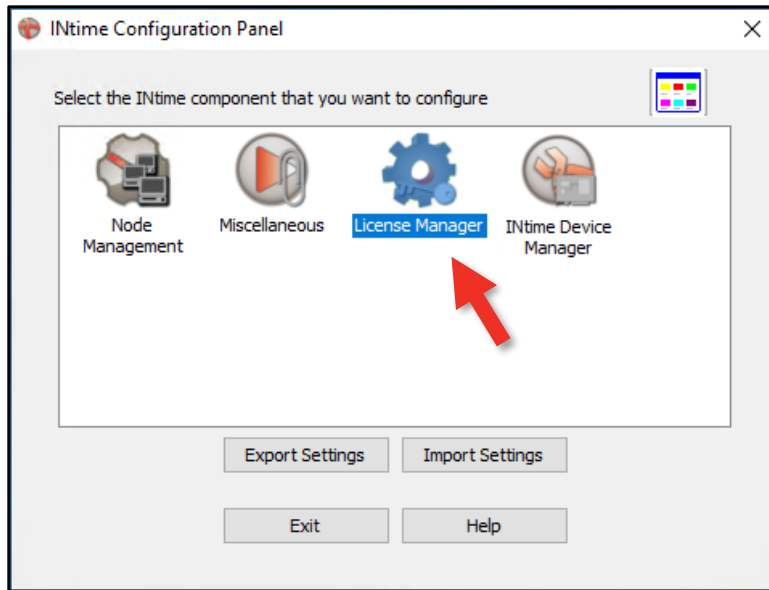


Figure 1.1 – Selecting the License Manager applet

Launching the License Manager applet

In the INtime Configuration panel, double-click the *License Manager* icon.

Confirm obtaining a license over the Internet

The INtime Configuration tool will prompt to obtain an INtime license over the internet. If the distribution host is already licensed, this dialog will not appear.

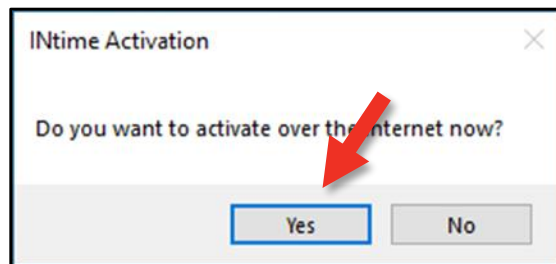


Figure 1.2 – Starting the internet licensing dialog

Click the “Yes” button to proceed.

Enter User Info

The license manager applet dialog will appear prompting for *Username* and *Password*.

If you see a prompt for an Entitlement, click on “Go To Login”

Obtain the *Username* and *Password* from the *Operations Manager Contact* at your company.

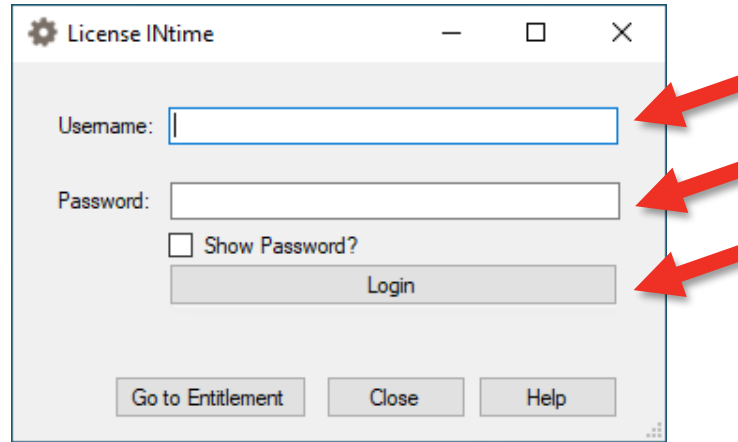


Figure 1.3 – The INtime license manager applet login form

Login - Click on Login.

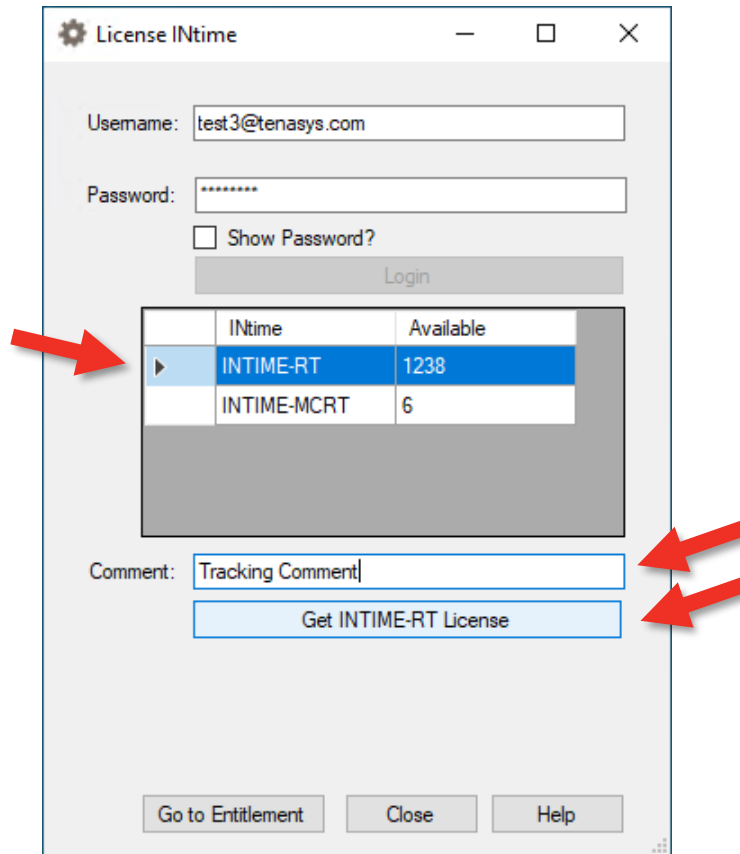


Figure 1.4 – Selecting the License Type

Select the type of license to generate

Once the login has been validated, select the type of license for the distribution host. The Available column shows how many Entitlements are remaining in your company’s account.

Enter a Comment

Enter a tracking comment (the Operations Manager for your account will see this comment).

Generate the License

Click on the “Get ... License” button. This action consumes one Entitlement from the account.

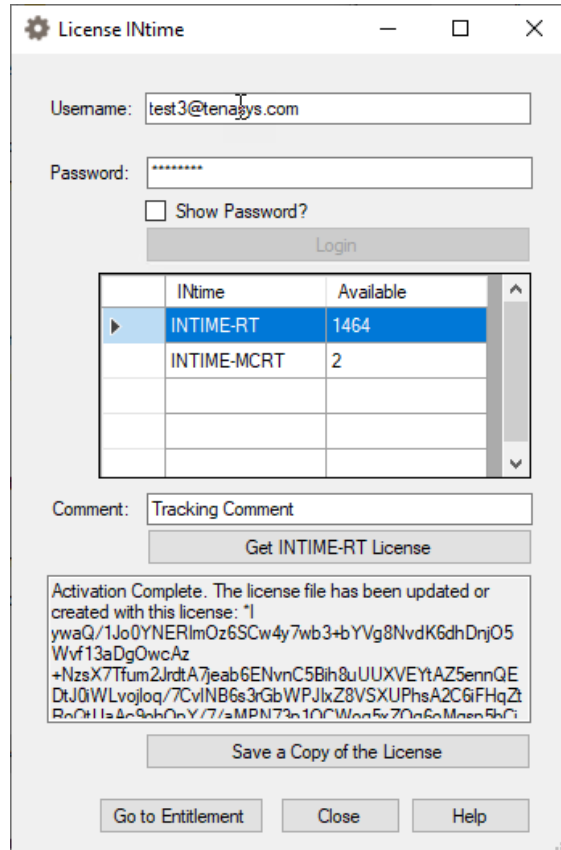


Figure 1.5 – Successful license applied

Save the license file

Click on the “Save a Copy of the License” button if you want to save a copy of the license to a file. The lservc file has already been updated, and the distribution host has been licensed.

A restart of the INtime Kernel Manager is required.

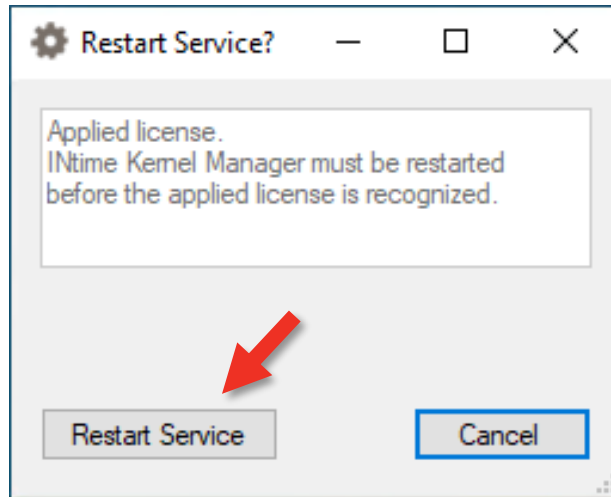


Figure 1.6 – INtime Kernel Manager restart

Viewing the installed license

Open the *License Management* applet to view the new license entry.

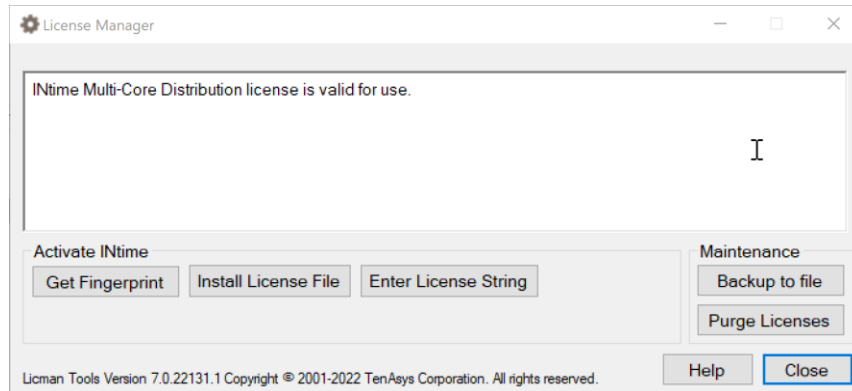


Figure 1.7 – List of installed licenses after license is applied